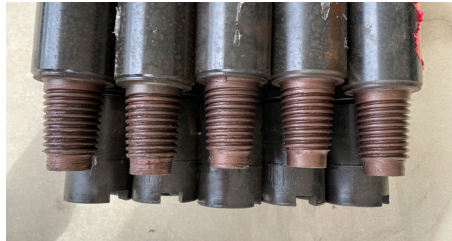


PREMIER JT3020 DRILL RODS

Supplying the market with premium drill pipe.



Premier horizontal directional drill rod is a premium manufactured product. We start with 4137H extra wear-resistant bar stock and heat treat the tool joints to oilfield API S135 specifications for ultimate fatigue resistance.

The tool joints are machined to exact specifications and matched with precision fabricated tube bodies.

The tubes are cut to length from a 4100 alloy series, high chromemoly seamless tube and are forged, heat treated and machined to compliment the tool joints.

The components are then inertia welded, producing an uncompromisable weld. This process is the exact same which is used throughout the world for oilfield drill pipe manufacturing.

The rod is then MAG particle inspected to ensure the integrity of the weld. It is because of our attention to detail that our rods can be used with confidence as it is subjected to the combined loads of pull/thrust, bending and torque produced from the drill rig.

General

HDD compatibility Ditch Witch JT30* / JT2720 Mach 1*

Thread form V-0.038R

Dimensions

Tube OD 60.3mm

Tube WT 7.1mm

Tool Joint OD 76.2mm

Tool Joint ID 22.2mm

Rod Length 3.279m

Weights

Rod 47.2kg

Performance

Bend Radius*, min. 42.9m

Bending Ratio*, max. (°per rod) 4.4°

Built Ratio*, max. (% slope per rod) 7.7

Yield Torque (N-m) 6,823

Make-up Torque (N-m) 4,094

Tensile Strength (N) 1,106,654

* Ditch Witch, JT30 & DW2720 Mach 1 are trademarks of Charles Machine Works.

** Bend limits are valid only for pure bending (no other loads acting at the same time, e.g. Push/Pullback, etc).



We supply other drill rods to suit most OEM rigs.

For more information, talk to us today

AUSTRALIA
03 9068 5688

sales@blick.group
www.blick.group

